

CanEasy's FUNCTIONS AT A GLANCE

Simulation

- Import of the communication matrix (DBC, ARXML, LDF)
- Simulation of non-existent control units
- Support of various protocols (ISO-TP, UDS, KWP, XCP)
- Signal modulations and arithmetic functions

Analysis

- Record and replay function
- Trigger and alarm functions
- Busload and cycledtimes
- Plots and traces

Diagnosis

- Supports UDS/ KWP2000, XCP/ CCP, SOME/IP and DoIP
- Import of CDD, ODX, PDX, ELF, MAP and A2L files
- Fault memory window

Automation

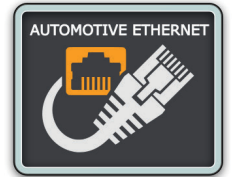
- MultiStudio for writing/debugging code in C#/ Python
- Integration into any test framework
- Programming of dynamic processes
- Scheduler for creating sequences

User Interface

- Attractive graphical RichPanels with IDE
- Database editors
- Automatically generated panels

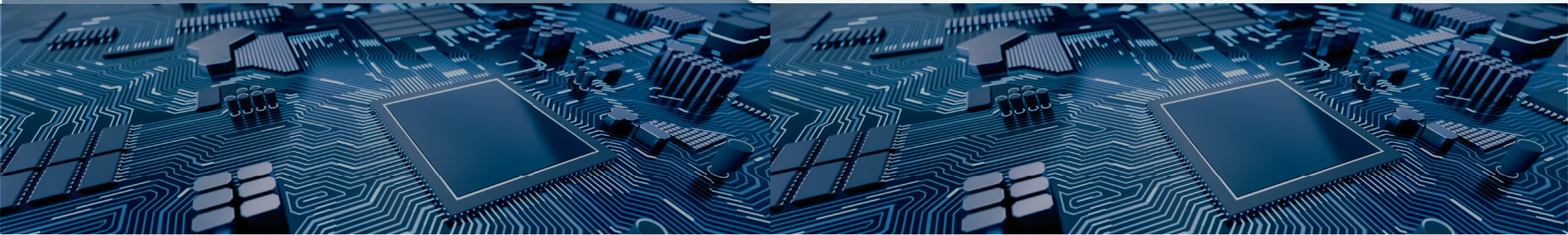
CANoe-compatibility

- Import of complete CANoe configurations
- Execution of CAPL test modules
- Support of the file formats CFG, BLF, ASC, CAN, XVP, CNP



CanEasy

*Test, analyze and simulate
with one tool*



THE ANALYSIS AND TESTING ENVIRONMENT FOR CAN (FD), LIN AND AUTOMOTIVE ETHERNET

CanEasy integrates seamlessly into any existing tool chain. It is easy to use without programming skills, is highly automated and extendable.

With CanEasy, real and simulated electronic control units [ECUs] communicate across different buses following the communications matrix [residual bus simulation].

This tool not only facilitates software development testing, work preparation, repair and production but also provides benefits for teams, due to its efficiency and ease-of-use. It saves effort, time and costs compared to common development tools.

BENEFITS AT A GLANCE

Intuitive usage



Efficient & highly automated



Flexibly configurable



Wide range of functions



Individually extendable



Compatible with Vector



Ensures software quality



Supports a variety of hardware adapters



Maintenance & support



Attractive prices & flexible licence model



OUR COMPANY

Schleißheimer Soft- und Hardwareentwicklung GmbH is a development service provider for the automotive industry.

Since 25 years we have successfully developed modern control units and intelligent systems for cars and integrated new technologies into vehicles of all kinds to support comfort, safety and efficiency.

As a strategic development partner of Continental AG, we are experienced in the development of instrument clusters, HUDs and Head Units for Daimler, Volkswagen, Porsche and BMW.

*„CanEasy – BY DEVELOPERS
FOR DEVELOPERS!“*

Schleißheimer Soft- und Hardwareentwicklung GmbH

Am Kalkofen 10
DE-61206 Woellstadt
(DE) +49 6034 9148 971
sales@schleissheimer.de
www.caneasy.de
www.schleissheimer.com

CanEasy MultiStudio

CanEasy's Multilanguage Studio allows writing and debugging code with different programming languages like C# and Python in Visual Studio Code. Users can access it directly via the CanEasy tree and find several integrated templates for realising applications.



Advantages of the MultiStudio:

- Visual Studio Code is integrated with CanEasy – no additional licences required
- Unified, integrated development environment for different programming languages
- Code runs with high performance in the CanEasy process space
- Code can be saved directly in the workspace or externally to use Git, Mercurial or other team development tools

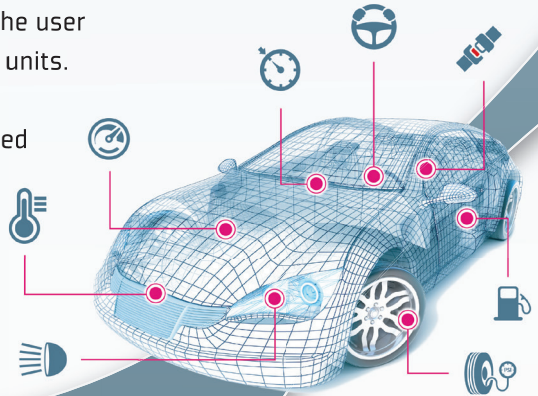
Use your preferred
programming language
together with CanEasy

CanEasy Diagnosis

With the diagnostic function of CanEasy the user can verify the functionality of the control units.

Diagnostic service parameters are recorded and analyzed within plot windows.

Missing services or parameters can be created manually.



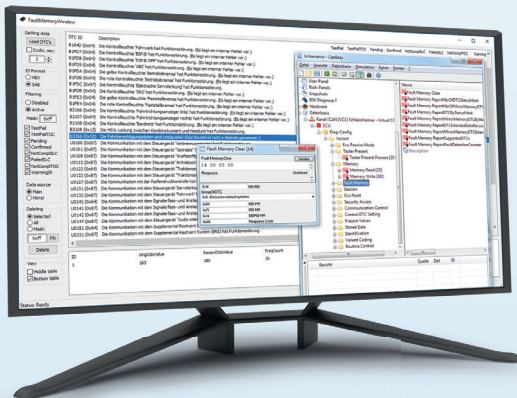
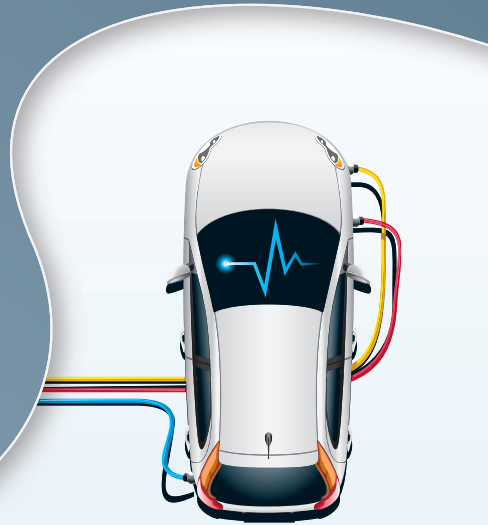
UDS, KWP, XCP

CAN-Bus



CanEasy supports UDS, KWP2000, XCP, CCP, SOME/IP, DoIP protocols and can import CANdela-Studio [CDD], ODX, PDX, ELF, MAP and A2L files.

Diagnostic tests can also be automated via API or schedule tables.



The fault memory window is a powerful user interface which reads out and lists decoded Diagnostic Trouble Codes (DTC).

Am Kalkofen 10
DE-61206 Woellstadt
[DE] +49 6034 9148 971
sales@schleissheimer.de

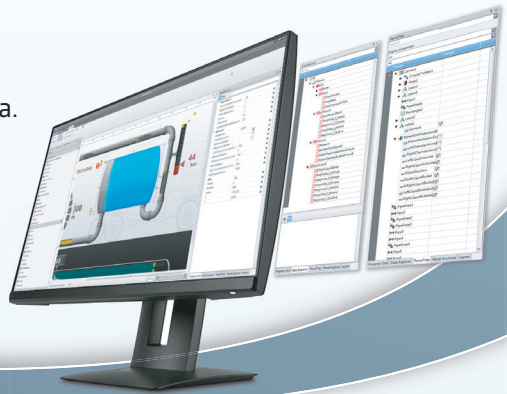
www.caneasy.de
www.schleissheimer.com



CanEasy RichPanels

RichPanels are attractive graphical panels.
They represent and control any kind of data.

The RichPanels display simple as well as complex scenarios. A wide range of provided control elements makes this possible.



Operating and display panels
can be created quickly via drag & drop.

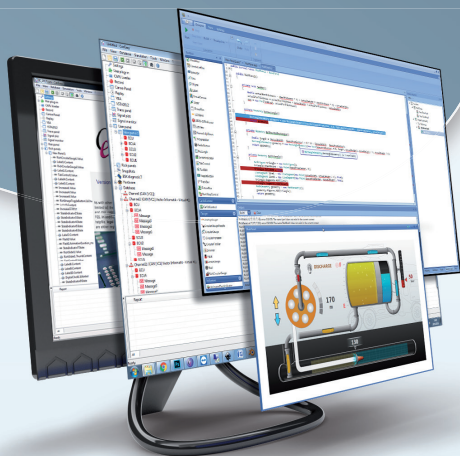
So, applications can be controlled
via an attractive interface.



The control elements can be used directly
or individual ones can be created as
plug-ins.
Using the pie menu the user can assign
attributes of any database item to proper-
ties of the control.



The PanelDesigner of the RichPanels offers a variety of attributes that can be changed as in a professional design tool.



NEW

The integrated development environment (IDE) makes it possible to implement control behaviour.



SCHLEISSHEIMER SOFT- UND HARDWAREENTWICKLUNG GMBH

Am Kalkofen 10

DE-61206 Woellstadt

(DE) +49 6034 9148 971

sales@schleissheimer.de

www.caneasy.de

www.schleissheimer.com

